

## **Pole / Wall-Mounted Outdoor UPS**

CNW110-1K 1KVA/600W





# CNW110-1K

1KVA/600W

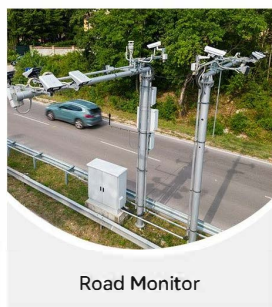


Model: **CNW110-1K 1KVA/600W**  
Nominal Voltage: **220 VAC**  
Nominal Frequency: **50Hz/60Hz (auto-sensing)**  
Installation Method: **Pole-Mounted/ Wall-Mounted**

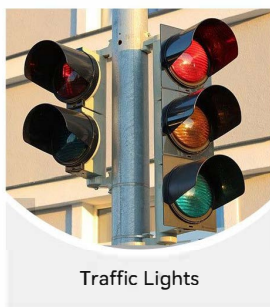
## Main Features

- The drawer-type control unit is easier to install and maintain
- Excellent microprocessor control optimizes reliability
- Built-in Network Monitor Card for remote monitoring
- Offering LED and LCD panels for selection
- Boost and buck AVR for voltage stabilization
- Auto restart while AC is recovering
- Lightning protection
- Built-in super smart charger, shorten charging time
- Monitoring Software, shows device status, load status and more

## Application Field



Road Monitor



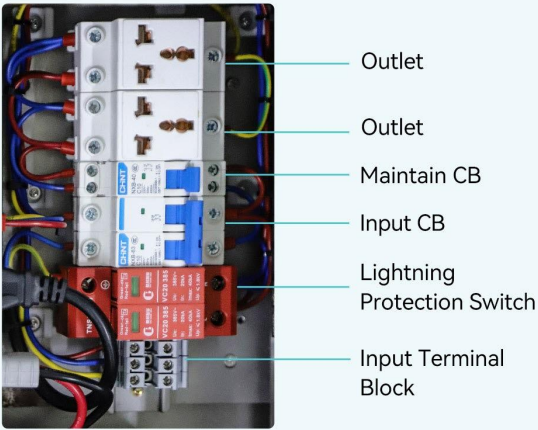
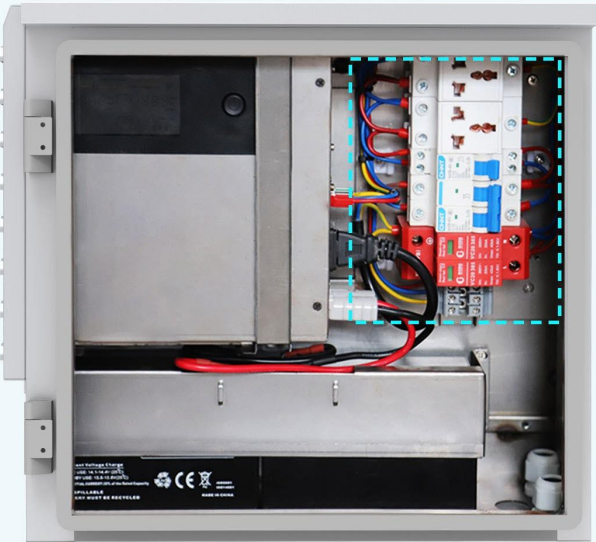
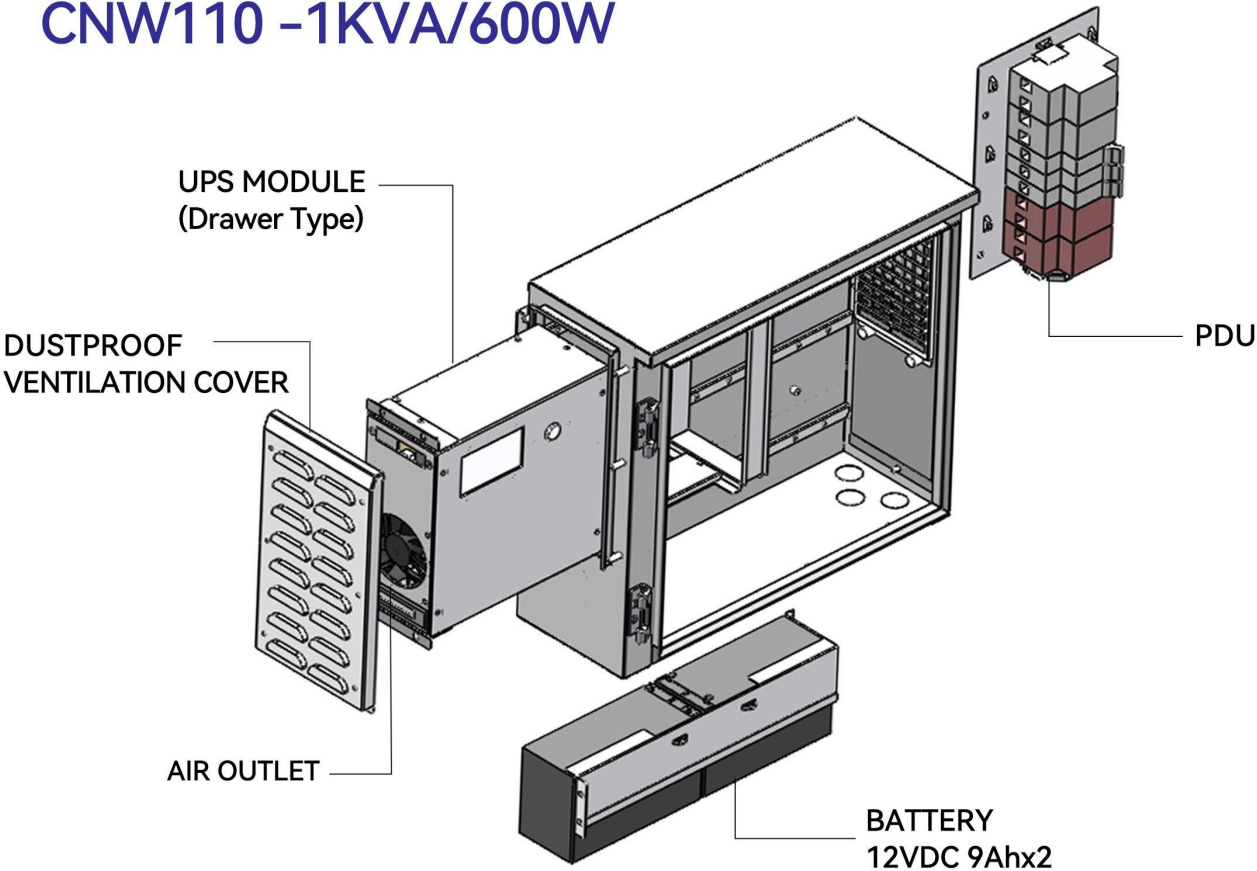
Traffic Lights



CCTV



# CNW110 -1KVA/600W



## Technical Specifications

### CNW110-1K 1KVA/600W

Capacity	1000VA/600W
<b>Input</b>	
Voltage	220 VAC
Voltage Range	140-300 VAC
Frequency	50/60Hz
<b>Output</b>	
Voltage Regulation	230 VAC (+-10%)
Frequency	50/60Hz
Transfer Time	Typical 2-6ms, 10ms max.
Waveform	Simulated sine wave
<b>Battery</b>	
Number & Type	12V/9AHx2, Lead Acid
Charging Time	6 hours recover to 90% capacity
<b>Physical</b>	
Dimension (WxDxH mm)	380*359*163
Net Weight (KGS)	16.5 (with battery)
Material	Cold rolled steel plate with outdoor spray powder
Installation	Pole-Mount
Protection Level	IP55
<b>Display</b>	
Display	LED/LEM display
<b>Communications</b>	
Communication Interface	AY19 UPS Network Monitor Card (10/100M RJ45)
<b>Environment</b>	
Humidity	0-95% RH (non-condensing)
Temperature	-5°C-50°C
Noise Level	Less than 40dB

\* All specifications subject to change without notice.  
This logo is belong to CONSNANT Technology

